

1900 ASTON AVE

CARLSBAD RESEARCH CENTER



FOR LEASE
CORPORATE HEADQUARTERS
R & D LIGHT MANUFACTURING

FOR MORE INFORMATION, CONTACT:

ROGER CARLSON
Senior Vice President
Lic. 01236185
+1 760 438 8533
roger.carlson@cbre.com

LARRY CAMBRA
Senior Associate
Lic. 01492381
+1 760 438 8538
larry.cambra@cbre.com

CBRE, INC.
5780 Fleet Street
Suite 100
Carlsbad, CA 92008
cbre.com/sandiego

CBRE



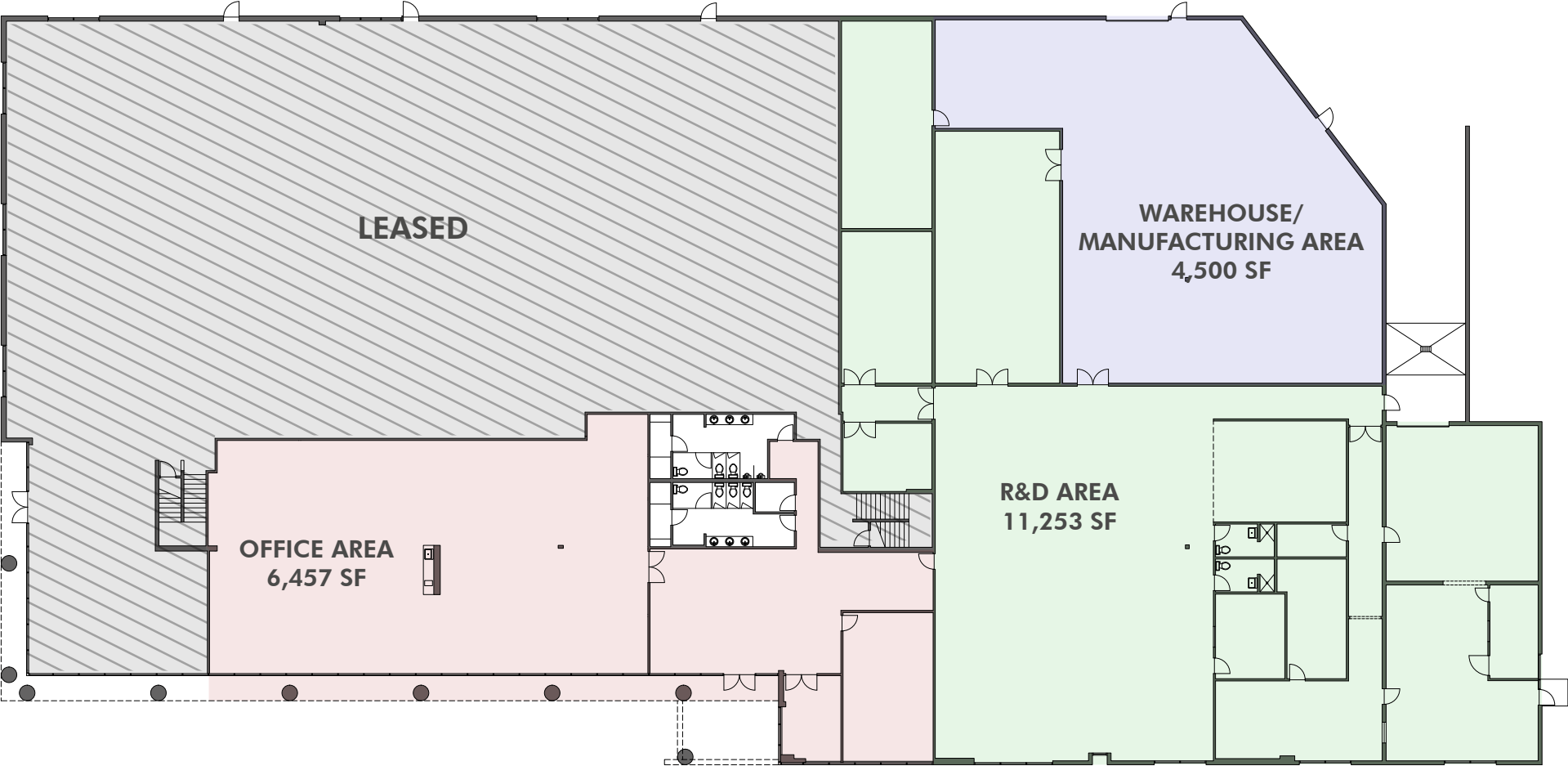
SUITE DETAILS

- » Suite 100- approx. 22,825 SF
- » 100% HVAC
- » Parking: 75 spaces (3.3/1,000 SF)
- » Power: 1200 amps. 277/480 Volt 3 Phase
- » Distributed power and air in warehouse
- » 22' Minimum clear height
- » One 10' x 12' dock high door
- » One 12' x 14' grade level door
- » Fire sprinklers (.45/3,000 SF)
- » Easy access to I-5
- » Walking distance to food services



FLOOR PLAN

SUITE 100
22,825 SF



LOCATION



1900 ASTON AVE
CARLSBAD, CA 92008

